

Towards Sustainable Development

**Metro North
Serving Dublin Airport**

**Frank Allen
Chief Executive
Railway Procurement Agency**



Why Metro North?

- Commuter link for North Dublin
- Builds on success of Luas
- Meets planning objectives in the GDA
- Facilitates growth of Dublin airport
- Will reduce journey times
 - 26 minutes from Swords to St Stephen's Green
 - 17 minutes from Airport to St Stephen's Green
- 34 million passengers per year
- 4 minute frequency increasing to 90 seconds
- Up to 20,000 passengers per direction per hour
- Will remove cars from the road
 - 100 million+ vehicle km per year



Why this route?

- Fully compliant with County Development Plans and is favoured by the local authorities;
- Attracted strong local support during consultation
- Has the highest forecast patronage
- Has the highest benefit to cost ratio
- Strongest in minimising environmental impacts
- Offers fast, efficient transfer to airport terminals
- Serves key institutions including:
 - Hospitals; Universities; Sports and leisure venues; Shopping districts; and Employment centres



Lissenhall
Seatown
Swords
Nevinstown



Airport
Metropark
Santry Demesne
Ballymun
Dublin City University



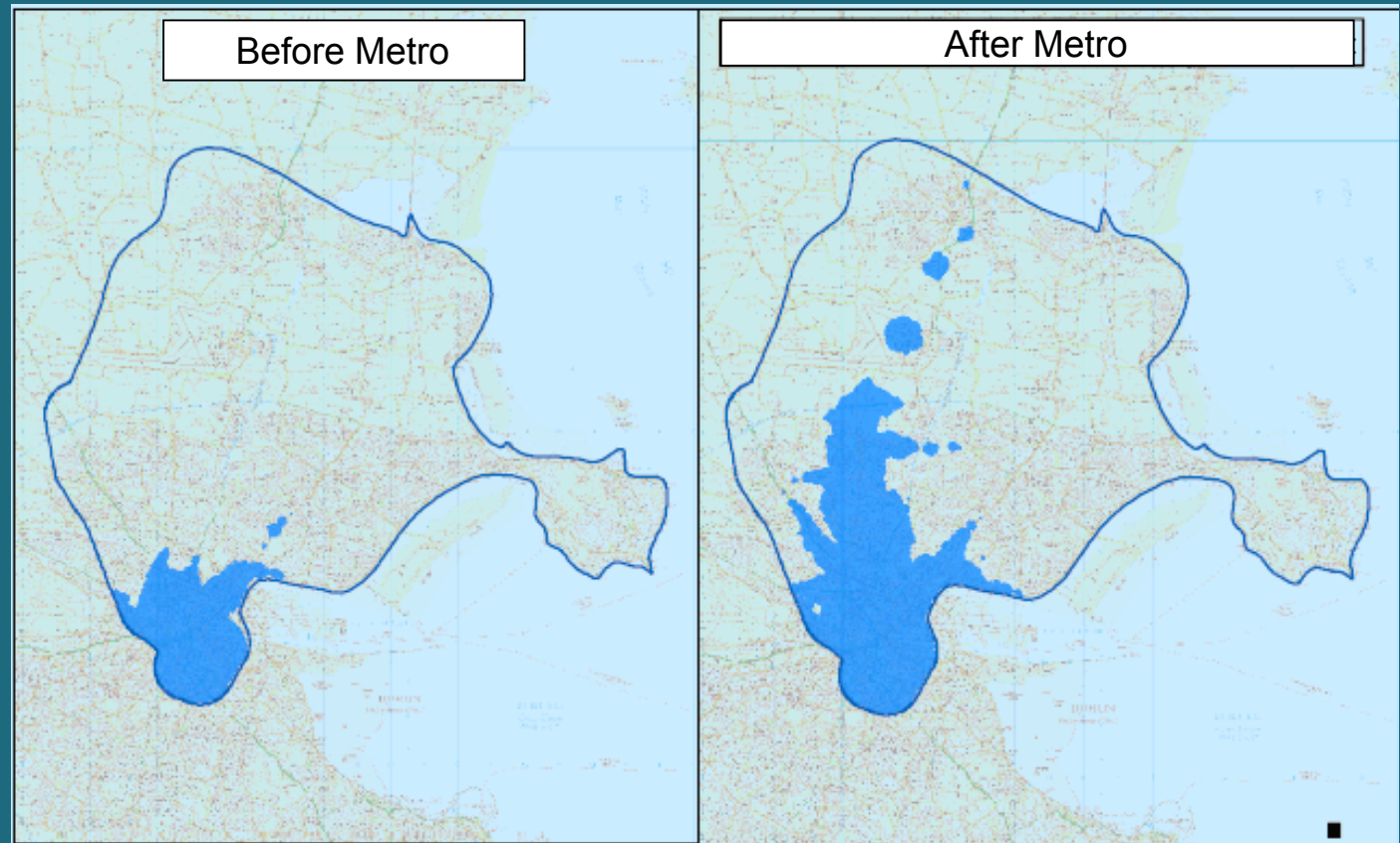
Griffith Avenue
Drumcondra
Mater
Parnell Square
O'Connell Bridge
St Stephen's Green

Accessibility to city centre & Dublin Airport

Route	Households within 30 minutes of the city centre by public transport (2004)		Households within 30 minutes of Dublin Airport by public transport (2004)	
	Number	% increase	Number	% increase
Without Metro	20,074	n/a	13,792	n/a
With Metro North	36,903	83%	42,619	209%

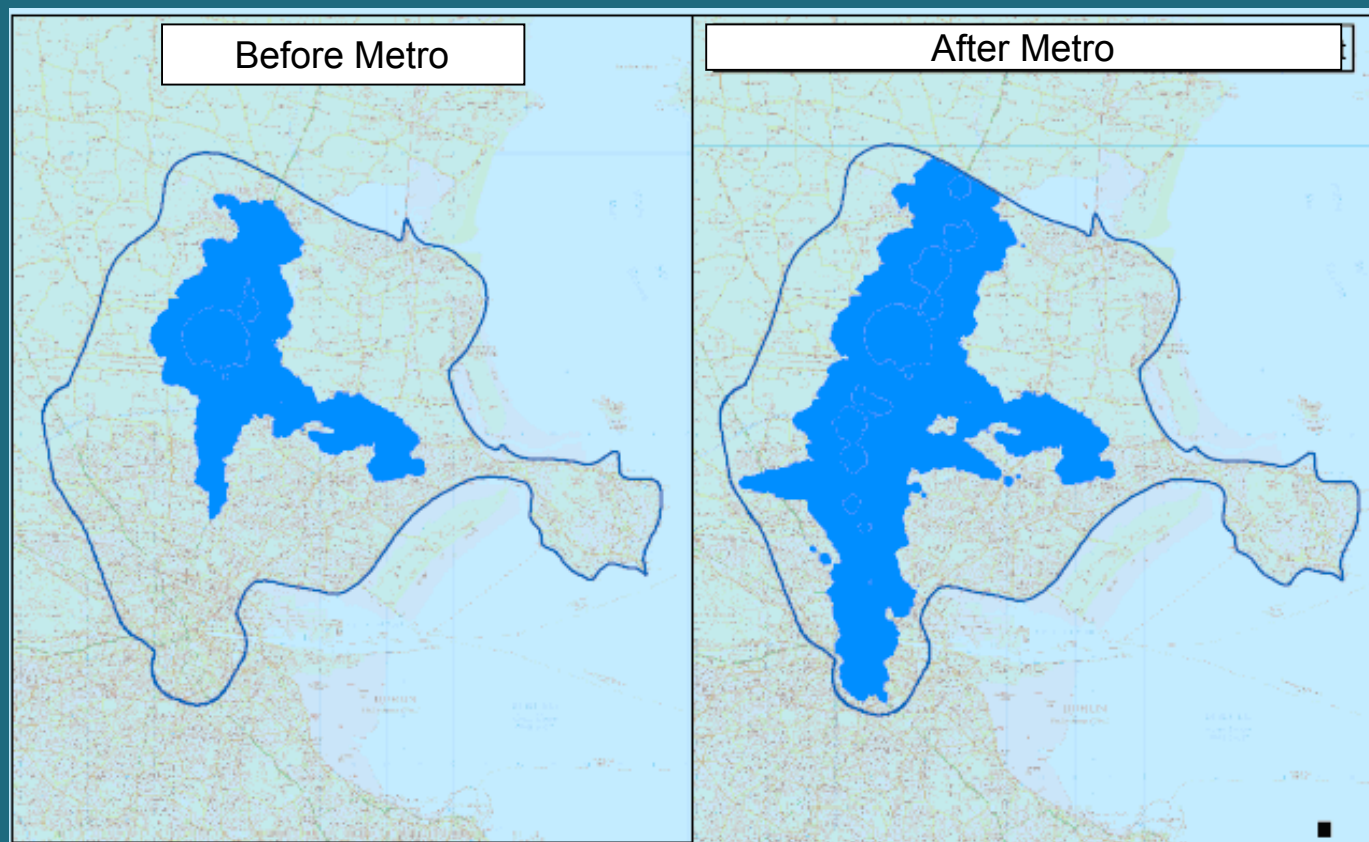
Accessibility to city centre

Areas within 30 minutes of city centre by public transport before and after Metro North



Accessibility to Dublin Airport

Areas within 30 minutes of Dublin Airport by public transport before and after Metro North



Metro North will:

- Secure the economic and social vitality of the heart of Dublin
- Provide mobility for growing population in Fingal and North Dublin
- Facilitate development of key institutions such as DCU, Mater Hospital and Ballymun Town Centre
- Provide excellent access for passengers and staff at Dublin Airport.